



[www.kentconservation.org](http://www.kentconservation.org)



## Board of Directors

**Nancy Benner, Chair**  
**Jerry Miller, Vice Chair**  
**Phil Weber, Treasurer**

**Jen Howell, Associate**  
**Bryan Heffron, Associate**  
**John Lemmenes, Associate**

## Staff

**Matthew Soehnel**  
District Conservationist, NRCS  
[matthew.soehnel@mi.usda.gov](mailto:matthew.soehnel@mi.usda.gov)

**Jason DeMoss**  
Soil Conservationist, NRCS  
[Jason.DeMoss@mi.usda.gov](mailto:Jason.DeMoss@mi.usda.gov)

**Katie Droscha**  
CTAI - Soil Conservationist  
[katie.droscha@mi.nacdnet.net](mailto:katie.droscha@mi.nacdnet.net)

**Eric Wahrman**  
CTAI - Engineer  
[Eric.Wahrman@mi.nacdnet.net](mailto:Eric.Wahrman@mi.nacdnet.net)

**Sam Braman**  
MAEAP Technician  
[samantha.braman@macd.org](mailto:samantha.braman@macd.org)

**Nick Sanchez**  
District Forester  
[Nick.Sanchez@mi.nacdnet.net](mailto:Nick.Sanchez@mi.nacdnet.net)

**Connie Redding**  
Conservation Coordinator  
[connie@kentconservation.org](mailto:connie@kentconservation.org)

**Jessie Schulte**  
District Administrator  
[jessie.schulte@macd.org](mailto:jessie.schulte@macd.org)  
616-222-5801



## Kent Conservation District

3260 Eagle Park Dr. NE  
Grand Rapids, Mi 49525  
616-942-4111 ext. 4

[www.kentconservation.org](http://www.kentconservation.org)  
[Facebook.com/KentCDGRMI](https://www.facebook.com/KentCDGRMI)

# Annual Report Fiscal Year 2016

*Kent Conservation District's mission is to protect and enhance the natural resources of Kent County through voluntary programs available for private landowners in rural and urban areas, such as: habitat restoration assistance, MAEAP verification, Farm Bill Programs, and technical assistance to all landowners.*

## Natural Resources Conservation Service

NRCS administered Farm Bill offers conservation practices and easement programs to eligible landowners to conserve working agricultural lands, wetlands, grasslands and forestlands.



Total currently, brought to Kent County by NRCS: 24 active Farm Bill contracts administered out of the GR office in Kent County. This includes 20 active EQIP contracts (\$443,197), 2 Conservation Stewardship Program contracts (\$9,672), and 2 Agricultural Conservation Easement Program, Wetland Reserve Easement (ACEP-WRE) for \$361,933.

## CONSERVATION TECHNICAL ASSISTANCE INITIATIVE

Eric Wahrman, District engineer, worked on 76 projects throughout southwest Michigan with 28 designs approved and 4 constructed. Some of the many designs completed were agrichemical handling facilities, fueling facilities, heavy use area protection, access roads, roof runoff structures, and animal trails.

Katie Droscha, Soil Conservationist, worked with 47 different farms; 19 in Kent County and 28 in Ottawa County. She assisted with 14 total EQIP applications funded within the past year addressing different environmental resource concerns (manure storage, agrichemical storage and record keeping, irrigation water management and pollinator habitat.

## Habitat Restoration and Technical Assistance

### NATIVE PLANTS

Presented two "Gardening with Native Michigan Plants" workshops to educate landowners on using native plants to support pollinators and a healthy ecosystem, uniquely West Michigan.



Held the bi-annual native Michigan tree and plant sales, providing a resource for ecosystem restoration.

Designed native plant plans for KCD office pond with Forest Hills Northern Trails (Groundswell project funded through DEQ/GVSU) to demonstrate non-point pollution best management practices in a commercial setting.

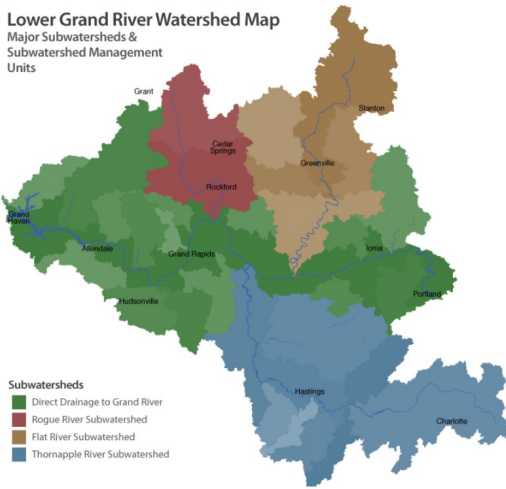
### FOREST HEALTH

Nick Sanchez, District Forester, assisted 118 private landowners on over 5,300 acres resulting in 72 referrals for forest management plans, consulting forester services, and sustainable timber harvests in the Kent, Montcalm and Ionia service area. Over 1000 acres were enrolled in the Qualified Forest Program, a tax incentive for non-homestead landowners engaged in sustainable forest management.

### INVASIVE SPECIES

Strike Team treated invasive species at 67 sites. Held 3 workshops and a pesticide training to educate landowners and professionals about proper identification and treatment of invasive plants.

**Lower Grand River Watershed Map**  
Major Subwatersheds & Subwatershed Management Units



Lower Grand River Organization of Watersheds: Discover and restore all water resources: [www.lgrow.org/](http://www.lgrow.org/)

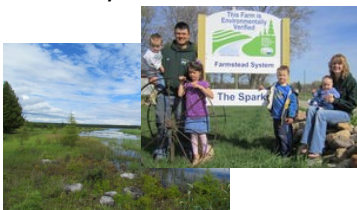
**URBAN PARTNERS**

KCD helped secure a \$48,723 National Association of Conservation District grant to support Urban Roots Community Farm and Education Center. They have expanded upon existing collaborations and developed multiple pathways to further their social and ecological impacts.



**MICHIGAN AGRICULTURE ENVIRONMENTAL ASSURANCE PROGRAM**

MAEAP is a 'stamp' of approval from the state that an agricultural production operation is protecting the environment. Since June 2015 KCD has doubled the yearly number of verifications in the county.



**SHOW YOUR SUPPORT FOR KCD!**

Mark your calendar for the annual spring native plant sales April 29 & May 13 or join the *Friends of Conservation* 501(c)(3). Email: [administrator@kentconservation.org](mailto:administrator@kentconservation.org)

**WATERSHED PARTNERS**

Developed and administered a survey for Flat River watershed residents, both rural and residential. A total of 963 residents were mailed 5 survey 'waves' according to DEQ guidelines for Social Indicators Data Management and Analysis (SIDMA). Results were tabulated and analyzed to aid the delivery of effective messaging.

Held public meetings (5) to inform the public of water quality testing and findings in the Flat River Watershed. Draft watershed management plan submitted by our partners for the 319 grant administered by KCD. [www.flatriverwatershed.org](http://www.flatriverwatershed.org)

Rogue River Watershed Partners—Continued work to support Rogue River Watershed Partners (RRWP) by attending meetings, providing input, and serving as Treasurer. Meetings held second Wednesday of the month at Cannon Township Center 9:30 -11am.

Partnered with Grand Valley Metro Council for USDA Regional Conservation Partnership Program. Participated in meetings of the West Michigan Regional Prosperity Initiative

<b>BUDGET WORKSHEET</b>	Actual 2015-2016	Proposed 2016-2017
<b>Revenue</b>		
State Grant Funds (MDARD)	\$196,237.85	\$193,596.00
Federal Grant Funds (DEQ)	\$126,088.86	\$15,570.00
Contributions from Local Units	\$3,536.73	\$6,000.00
Charges for Services & CISMA	\$10,887.50	\$41,380.00
Tree & Plant Sales	\$24,174.25	\$23,000.00
Other Revenue & Workshops	\$5,900.00	\$1,500.00
<b>Total Revenue</b>	<b>\$366,825.19</b>	<b>\$281,046.00</b>
<b>Expenditures</b>		
Operations, Admin, Staff & Tree Sales	\$62,375.87	\$68,092.50
NACD Urban Ag Grant	\$5,000.00	\$33,271.99
MAEAP Grant	\$58,376.00	\$60,826.00
EPA 319 Grant	52,873.76	\$12,300.00
CISMA	\$1,709.80	\$13,870.00
CTAI	\$108,520.19	\$120,779.00
Reconciliation Discrepancy	\$550.04	\$155.00
<b>Total Expenditures</b>	<b>\$289,405.66</b>	<b>\$309,294.49</b>

**REVENUE:** The District currently receives two grants through the Michigan Department of Agriculture and Rural Development. These are for District Operations, the Michigan Agriculture Environmental Assurance Program (MAEAP,) and the Conservation Technical Assistance Initiative.

The District earns a substantial portion of its revenues through its Spring and Fall Tree Sales. Natural Resources Conservation Service provides in-kind services such as use of office space. Other grants at times supplement these funding sources. The District does not receive funds through the County.